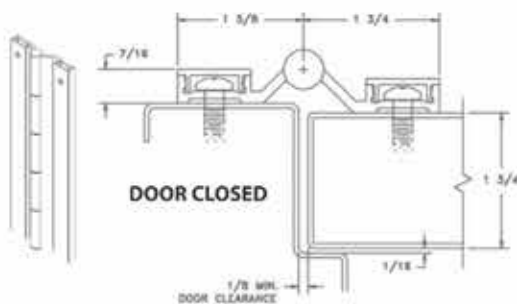


FULL SURFACE HINGES

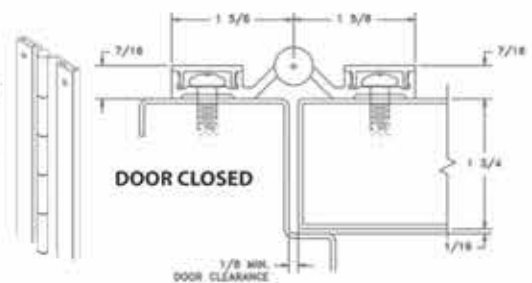
FS-101 Full Surface 1/8" Inset



MKFS-101-83C 1/8" Alum-Alum
MKFS-101-83D 1/8" Alum-D/Brz

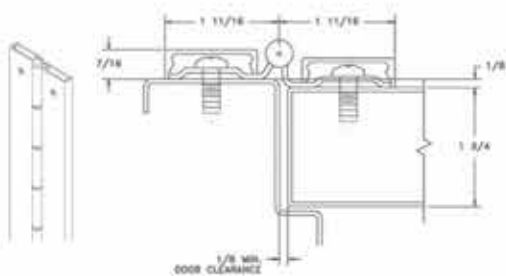
- Features:**
- Aluminum
 - Grade 2
 - No exposed mounting fasteners
 - Universal screw pack
 - Supports weights up to 600lbs.
 - 4'0" maximum door width
 - 7'0" Size
 - Brushed aluminum finish
 - 1/4" diameter Teflon-coated stainless steel pin
 - Long-life split nylon bearings

FS-102 Full Surface Flush Mount



MKFS-102-83C Alum-Alum
MKFS-102-83D Alum-D/Brz

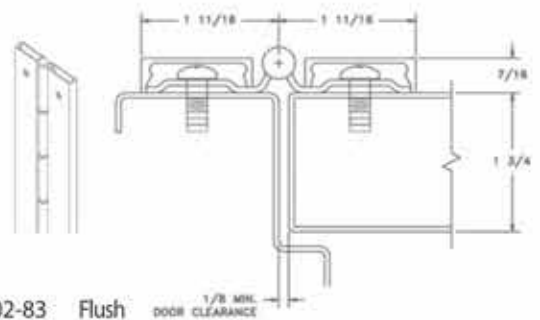
FS-201 Full Surface 1/8" Inset



MKFS201-83 1/8" Offset

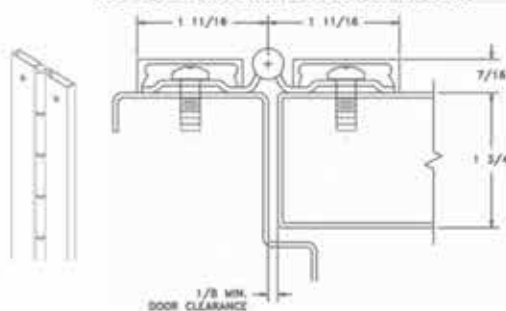
- Features:**
- Carbon steel
 - Fire Rated - 3hrs
 - Gray powder coat primer (PP)
 - Grade 2
 - No exposed mounting fasteners
 - Supports up to 600lbs
 - 4'0" maximum door width

FS-202 Full Surface Flush Mount



MKFS202-83 Flush

FS-302 Full Surface Flush Mount



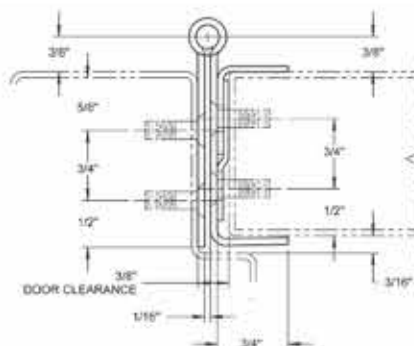
- Features:**
- Stainless steel
 - Fire Rated - 3hrs
 - Grade 1
 - Supports up to 600lbs
 - 4'0" maximum door width
 - 7'0" Size

FS-302

For flush doors. This surface-mounted pin & barrel type continuous hinge can be used to repair both fire labeled and non-labeled doors that have very tight clearances.

MKFS302-83 Flush, Stainless Steel

CONCEALED HINGE GUARD



- Features:**
- Stainless steel
 - Fire Rated - 3hrs
 - Wrap around edge guard
 - Opens to 180°

MKHG305-79

